



The Activelogix EV Dashboard provides a unified view of all connected electric vehicle charging stations across the Enterprise. Configurable as either a standalone application or integrated with the acclaimed Periscope™ Enterprise Dashboard, this system enables an economical, subscription-free, standardized view of all connected charging stations, regardless of manufacturer.

ELECTRIC VEHICLE UNIVERSAL DASHBOARD

Unified Network Management for Electric Vehicle Charging Stations

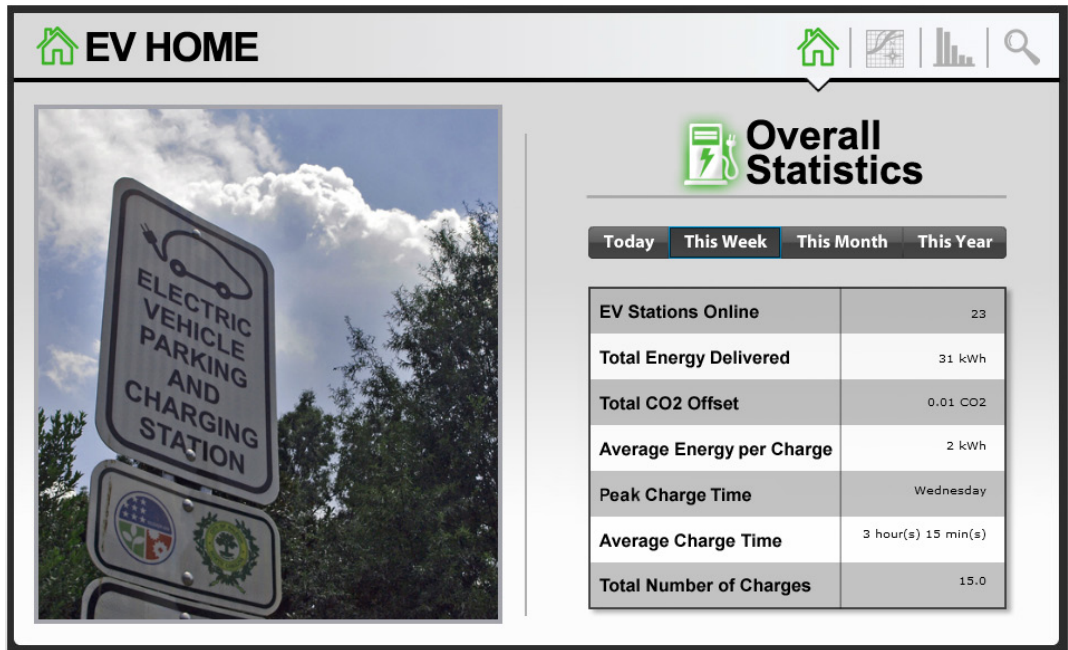
Overview





The Periscope™ Electric Vehicle Universal Dashboard from Activelogix enables the unprecedented ability to view and manage a hybrid network of electric vehicle charging stations, regardless of their manufacturer or type. Traditional approaches often require the owner to subscribe to each manufacturer’s “in-house” cloud network, which can be expensive and duplicative for a diverse network of systems acquired over time. With the Periscope EV Universal Dashboard, all station data streams are presented equally, allowing for clear, intuitive analysis and management. EV information includes total network performance, a map-based visualization of individual station status, as well as detailed metrics showing station usage, output and other critical parameters.


Applications


With the increasing evolution of electric vehicle technology, both from the vehicle manufacturers as well as the charging station suppliers, end users are seeking ways to both manage and publish charging station status and performance across their user base while minimizing long term operational costs and support services. Given the rapidly evolving EV technology, standards and features, discerning users are standardizing on device-agnostic visualization technology.

The EV Universal Dashboard from Activelogix allows end users the freedom to choose and grow with the best-of-breed station manufacturers and not be handicapped by a single manufacturer or prior purchase.



EV HOME    



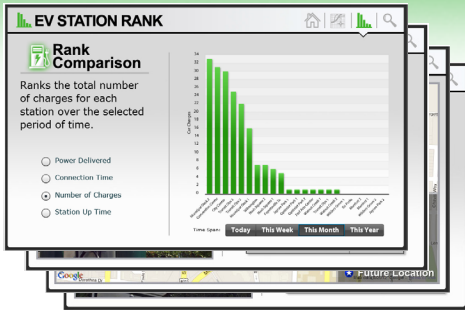


Overall Statistics

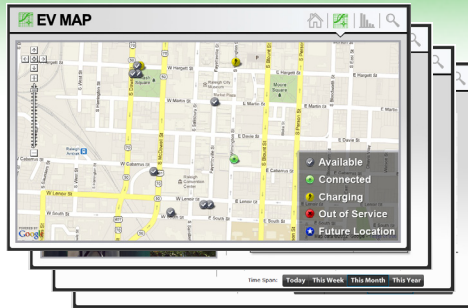
Today
This Week
This Month
This Year

EV Stations Online	23
Total Energy Delivered	31 kWh
Total CO2 Offset	0.01 CO2
Average Energy per Charge	2 kWh
Peak Charge Time	Wednesday
Average Charge Time	3 hour(s) 15 min(s)
Total Number of Charges	15.0

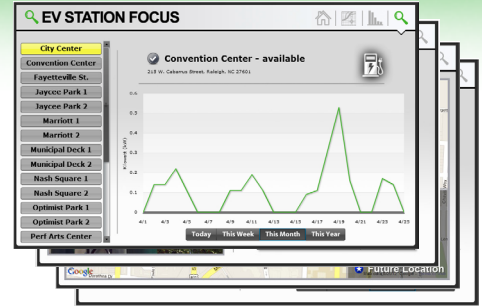
The main page of the EV Dashboard shows high level information aggregated across the entire EV network of stations, including the number of stations “on-line”, total delivered energy (kWh), along with other desirable information such as CO2 offset, energy delivered per charge, average time of day for peak usage and the number of total charges delivered. This information is user-selectable for a variety of time ranges.



Station Ranking for Power Delivery and Utilization Management.



Integrated Google™ Maps and Station Status.



Drill Down to Individual Stations for Detailed Analysis.

Features

The Electric Vehicle Universal Dashboard provides the user with a comprehensive array of features detailing every aspect of their use and status, regardless of manufacturer:

- EV Network Status at a glance - Shows which stations are online and available for charging
- Site Specific - Customizable moving picture display of client EV sites
- Kiosk Capability - Ability to run in unattended “Kiosk” mode when utilized with Periscope
- Map-Based Navigation - View all stations or just those of specific interest
- Statistical Ranking - Determine which stations are most utilized based on: Energy Delivered, Number of Charges, Average Connection Time, and Station Uptime
- Detailed Station-by-Station Analysis Including: Status (Available, Connected, Charging, etc.), Power Delivered, Time-of-Use, and User-Selectable Time Periods
- Industry Proven - Utilizes the Tridium-based Niagara^{AX} Framework for security, interoperability, and reliability

Requirements

The Electric Vehicle Universal Dashboard can access, organize and display a comprehensive set of information from a hybrid array of EV charging stations. The connected stations must support industry communications standards such as Modbus[®], and in select cases, basic serial interfaces can be used to source the data. Contact Activelogix to verify integration options.

The connected stations must be capable of supplying basic register information, including:

- Connection Status (Connected, Charging, Charge Complete)
- Charging Power (or real-time Charging Current and Voltage)



Periscope™ by Activelogix is a configurable, browser-based dashboard application that provides identification of real-time data and historical trends in the rapidly changing environments of multi-facility operations. Periscope reduces volumes of data from disparate systems into visual knowledge, providing the opportunity for users to quickly identify issues, access relationships, and take action in order to optimize resource efficiencies. Visit us at www.periscopedashboard.com.



Activelogix, LLC is a leading provider of internet-based enterprise automation solutions for building intelligence. By utilizing design services, consulting, custom applications and technologies, Activelogix supports the management and optimization of intelligent, sustainable, and secure facilities in a multi-vendor, cross-platform environment. Our software and hardware solutions are distributed through a growing channel of national accounts, systems integrators and original equipment manufacturers. Additional information about Activelogix and all available products and services can be found at www.activelogix.com, or by contacting Activelogix at 1-704-553-8510 or 1-800-670-5977.

www.activelogix.com

